

Sym Scalper

UPDATE-3 RECORDED VIDEOS, FOR MEMBERS ONLY! TRAINING ON THE SOFTWARE, WILL BE ON THE MEMBERS DOWNLOAD PAGE. THESE ARE 3 VIDEOS FROM JUNE 19TH, 20TH, AND 21ST. THESE RECORDED VIDEOS WILL GO OVER ALL THE OPTIMIZED RENKO SETTINGS THAT MAY OR MAY NOT BE IN THIS PDF. IF YOU ARE RECEIVING THIS PDF BEFORE THE 3 DAY MEMBERS ONLY CALL, PLEASE ATTEND. IF YOU CAN'T, ALL THREE WILL BE RECORDED.

The Software is for Educational Purposes Only. Please read our Risk Disclosure for complete risk details.

The SYM SCALPER was programmed to find ZONE BREAKS, FAILURE setups and OUTER EDGE SLING SHOTS all in one program. Users can spot these specific setups with the original ZONE BREAK and OUTEREDGE software that we previously released to members. Using the previous released software, users can specifically look for each Zone Break, Failure and Sling Shot individually as an indicator with audible alerts as in indicator or use it as order management software where the user can turn the software on an off for automated entries, stops and trailing stops. All three setups work in specific market conditions. If the markets are in between our HVA and LVA Market Profile levels (Balanced market) then the Sling Shot and Failure setups are the highest probability setups. If price is outside of our HVA and LVA Market Profile levels (Imbalanced Market) then the Zone Break is a high probability setup catching the wrongly positioned counter trend traders. When Market Profile HVA and LVA levels are broken, buy stops are being hit when HVA is broken and sell stops are being hit when LVA is broken. These are the most ideal times to look for Zone Breaks because the market likes to move hard in the direction of imbalance breakout. Users of the trade management software can turn on the Zone Break strategy by itself in these imbalanced markets or turn on the Failure and Sling Shot trades in balanced markets. In other words, we are educated to buy high and sell higher when HVA is broken or short low and buy lower when LVA is broken on our 2- and 4-hours Market Profile levels with Zone Breaks. Zone breaks tend to have runners in this scenario. Users can use our automated trade management software to turn on when this happens to manage entry, exit and trailing stops or use chart trader to manage the positions when the Zone Break indicator fires in these imbalanced areas.

The Sym Scalper will look for all these setups, not individually, but all at once. The performance of the Sym Scalper will depend on the specific market, strategy settings and the bar type settings. I will go how to adjust the Uni Renko settings to match the performance and style users prefer for their own reward to risk tolerance. The Sym Scalper can be customized to the users reward to risk. I will go over smoothed Uni Renko settings to Playback over the last month below so users can get a feel for the software and accuracy. Users then can customize the Scalper on shorter or longer Renko sizes.

Back testing or clicking historical performance when using the software does not consider accurate live fills and slippage that will occur. Renko bars are not accurate by simply clicking on a strategy performance and selecting historical performance. The reason being is that Renko bars are not standard

OHLB bar. The entries and exits will not always match up. *The best way with Ninja Trader is to replay or playback previous data and days. This will be the best way to find and fine tune the settings even before going on SIM. Once a user finds a performance that they like, the same settings then can be ran on SIM with live market action to see results as setups fire live.* Remember, running the Sym Scalper with live data on SIM or going to Market Replay playback will give better representation than just clicking historical data which are not accurate due to the open and closes with Renko bars. If you just use historical data, the entries and fills will not match up with live forward testing. We educate traders to run it on SIM and playback to get as close as possible to simulate live market fills. Simply by doing historical data, always show the perfect case, which is not the case. SIM forward or Market Replay helps with that, but never with historical performance data. Remember, historical data will not represent the correct entries or exits. Even if the historical matched up, historical performance is never indicative of future results. The historical exits will always be off when a stop out occurs. Running the strategy on SIM and playback helps users to fine tune their settings and come as close as they can to slippage and live market conditions. The Zone Break, Failure and Sling Shots settings are prebuilt into the Sym Scalper to find the setups. Users can find tune the settings and different UNI Renko sizes to fit their trading risk vs reward tolerance. I will give settings for users to test right away when they receive the software. I educate traders to take the exact settings in this PDF and run a replay of the settings 24 hours a day for the last 30 or 60 days. This will help users understand how the system spots trades and by simply adjusting the UNI Renko Trend, Offset and Reversal will change performance results to fit each user reward to risk tolerance.

Playback or Replay is under the CONNECTION tab. Users will disconnect from the live or sim feed then connect to the playback. Download each day that you want to playback. If you want to do the entire month, simply, download each day for the entire month before connecting to the playback. Once the playback is connected, adjust the start and stop time to reflect the playback you just downloaded. When the bottom left playback button turns green, it's ready to play back the entire start to finish. Pull up a new blank chart up. The chart should start on your start date. If not click the arrows to adjust the start and stop time that you just downloaded for playback. The new chart should reflect that start date. You can click on the green play button and the price action will start to replay. You can adjust the speed at the bottom right. Click pause then insert the Sym Scalper. Put all the settings in and click enable. You are now able to let it replay the desired dates and simulate live market conditions.

****If Ninja Trader is shutting the strategy down in replay, then your speed is too fast on play back and it cannot adjust the stop placement fast enough. If the strategy is shutting down on SIM, then the UNI Renko selected is too small and Ninja cannot keep up. Simply, increase the size of the UNI Renko when testing or slow down the replay to adjust for smaller target. An error message stating buy stop or sell stops can't be placed above or below the market. This is because the replay is moving too fast or the Renko size is way to small with the smaller targets selected because Ninja will not adjust that fast. You will notice the software on the replay with my settings below runs smooth due to the longer Renko and larger targets. Additionally, insert a new strategy on a blank chart when testing different markets. Meaning set up a new chart instead of going back and forth between markets on the same chart. The strategy might have a resting order in SIM that will not work the software correctly. Starting out with a new chart is best****

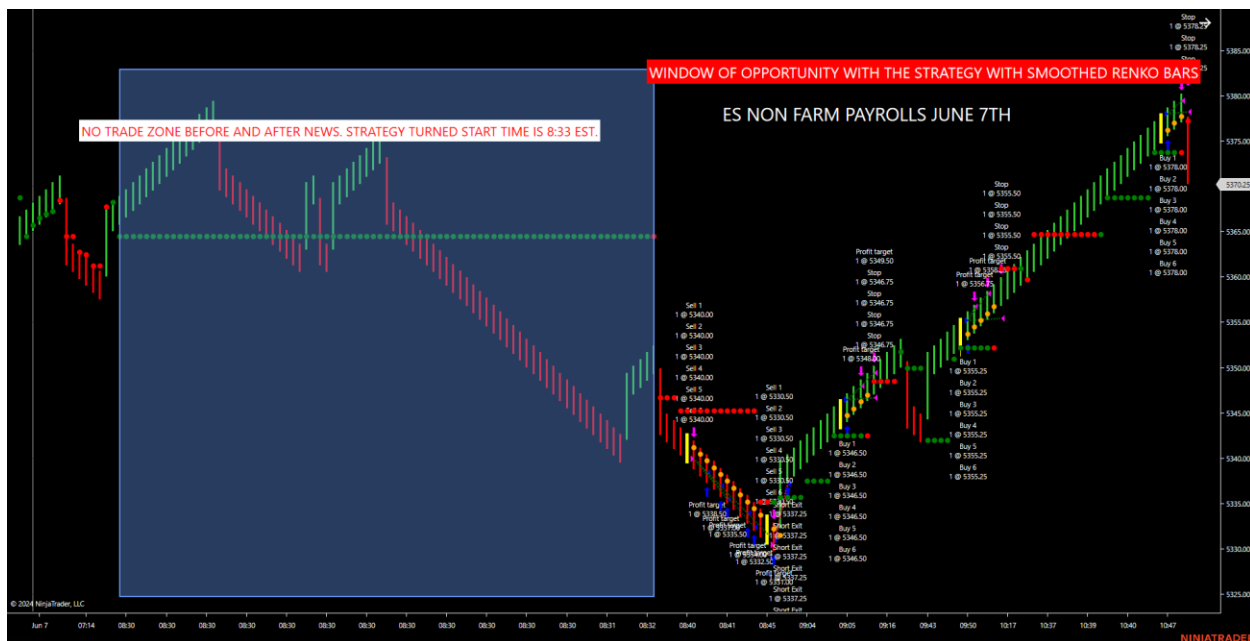
Sym Scalper Uni Renko Adjustable Settings

Uni Renko uses three parameters for traders plotting their chart: tick trend, open offset, and tick reversal. These settings will directly influence the Sym scalpers' performance. We have always used the 1/20 and 1/10 as standard settings, optimizing these settings can increase the Sym scalpers performance. I will show users below settings to replay on playback to get them started in the right direction and show that accuracy of the Sym Scalper when Uni Renko bars are adjusted from the standard 1/20 to a more optimized smoother larger setting for strategy trading. Remember, adjusting the Uni Renko Trend, Offset, and Reversal will directly affect the entries, stops and trails. I will go over how to smooth the Uni Renko bars by changing these parameters. Users can adjust to their own personal preference. I educate to use the following settings below and let it playback over the last month with running it on 24-hour playback. This way users can see how the software spots setups and how changing the Tick, Offset and Reversal can directly impact the performance.

Uni Renko allows the user to choose when the bar closes in the direction of the previous bar (Trend), and when it closes in the direction against the previous bar (Reversal). This allows you to tailor the bar to behave specifically how you want it in ways that hopefully may enhance the Sym Scalper to the user's preference. The Uni Renko in general removes the smaller noise and smooths out major swings when using a larger Trend and Reversal. By adjusting the UNI Renko settings, you can fit your reward to risk. Some users will want many shorter-term swings while others will want longer swings. I will go over this in a few with specific settings and users can customize to fit their style and preferences with the SYM SCALPER. Adjusting the tick trend, open offset and tick reversals will have a direct impact on performance on the SYM SCALPER.

News Events and New York Open

The strategy should not be enabled before or just after news events. The reason being, the stops, targets etc. will not be able to adjust fast enough and you will get an error message and the strategy will shut down. The rule of thumb is a 3–5-minute window before and after news events. The New York open can use the same rule. www.ForexFactory.com shows all the red briefcase news events against the USD on a weekly basis. This calendar can be printed out for the entire week. Simply highlight ONLY the red briefcase impact numbers against the USD under filters. The red impact news events should be avoided with strategy trading. Remember, Ninja Trader will not be able to keep up and adjust stops, targets, trailing stops etc. When doing a Market Replay or playback, the Ninja Trader will shut down if you are trying to run it on MAX replay with real small scalp targets. If you have small targets, simply slow replay down if the stop can't be adjusted by Ninja Trader that quick. When you run it on SIM with live data, you can see what it can handle. The settings that I give work well with playback on Max and Live Sim. I educate traders to set up the charts like I show below and run them over the last month on Playback to get a feel for the strategy.



Customizing Uni Renko Settings to Increase SYM SCALPER Performance

Our live room has been using the standard 1/20/20 and 1/10/10 Uni Renko. Does that mean that the strategy needs to run off these specific settings, no. Our video on May 31st showed the 1/20/20 on the ES as members in the live room watched it trade live all morning. This does not mean that members need to just focus on the 1/20. We optimized and smoothed the UNI Renko for the Sym Scalper with settings below. **The settings below were optimized for the ES only. We will show other markets in our 3-day recorded calls on the members download page.** When the market gets into chop the smaller UNI Renko charts will not filter out the small swings and noise which can produce false trends. I will show you below by adjusting the tick trend and reversal trend, users can optimize their performance on the strategy and smooth out noise in the market.

Adjusting the Renko settings can be used for News days to smooth out the noise. The strategy should not be turned on during the news. The rule of thumb is to turn it off 5 minutes before and we educate not to turn it on until 3-5 minutes after an important news release. The strategy will not be able to keep up with the wild swings and will disable. By adjusting the Renko tick and reversal, a lot of the noise on news days can be smoothed out. Let's break down the settings.

CONTRACT SIZE

The Sym Scalper can go up to 6 contracts. 6 contracts on the large contract can produce high rewards but also high losses. Adjust the software to fit your reward to risk. Users should be aware that the micros are 1/10 of the big contract. This will only take 1/10 of the big contract, however, it will only take 1/10 of the loss too. This is very important if you are trading larger Uni Renko sizes where the performance is good, but the drawdown will be larger staying in through the wiggle or volatility of the market. Use the Playback over and over with a large sample size of days of 30-60 days to fine tune your Renko size, target and stops. Remember, the strategy has all these 3 setups built into it. The most important features to adjust are the Uni Renko size, target and stops to fit the reward to risk. I will show examples below of the past 40 days on the ES with a smoothed Uni Renko. Let's give a brief breakdown of the strategy. I will be

breaking this down and doing monthly playbacks for all members and we will record it. ***This is found under ORDER HANDLING in the strategy below the enable button. Simply change the entries per direction from between 1-6 when running Playback or SIM.***

DRAWDOWN

Replay will help determine contract size and the drawdown on the losers. DON'T RELY ON HISTORICAL DATA. THE ENTIREES AND EXITS ARE NOT ACCURATE. STRATEGY ANALYZER WILL NOT BE ACCURATE. These are Renko bars. Playback and running LIVE SIM is the best way to fit the users reward to risk. Drawdown is one of the most important Playback numbers to optimize. Using the shorter Renko settings that are enclosed are half the drawdown of the larger Renko settings. Users can tweak to their own reward to risk on Playback before running it on SIM or use our settings and run it to show how the system works.

Users don't want to max out 6 contracts because maybe one or 3 losses can wipe the account. Replay will help fit the contract size to the size of the account for the average drawdown per loss. Micros can also be used for 1/10 of the gain or loss. We educate users to first playback the enclosed settings on the ES first, then SIM the same settings with live SIM data. This way, users can see what type of drawn down is produced from the settings the user uses. We give starting points for short, intermediate and longer smoothed Renko sizes. Users may find much better results with their own Tick and Reversal Uni Renko numbers. We provide a great starting point with the setting below and then the user can customize. The strategy has all three of our setups built into it so the user will just need to adjust the Trend and Reversal to their style of trading. We provide a short, intermediate and longer smoothed Renko in this PDF and we will show how to optimize our 3 recorded calls.

PARAMETERS

TREND-5 MINUTE (The Scalper has a trend filter already built in. Users can leave this 5-minute default setting. If users want to override the default setting, simply put in the Uni Renko that you would like or other bar type. The room uses a 1/65/65 as a trend filter. I educate traders to just leave it on the default of 5 minutes with this specific strategy.

ATR TRAIL TICKS-These settings are already preset for users and there is no need to change.

2ND ATR TRAIL TICKS-This setting is already preset for user and no need to change.

TARGET 1-6-The Sym Scalper can do between 1-6 contracts. Simply, go to Order Handling just under the enable toggle and select how many contracts. Remember, 6 contracts on the big contracts leave little room for stops where Micros are 1/10. Adjust the contract size accordingly.

START AND STOP TIME-This time window is when the strategy will trade.

BE+1-This toggle switch can be turned on or off. When checked, it is on. This is the Breakeven plus1 will occur on all contracts after the first target has been hit. If turned off, no breakeven after the first target will occur and the hard stop will be in place or the ATR trail selected, whichever comes first.

COUNTER TOGGLE- The focus on this toggle is that it will spot Failure setups and Outer edge setups inside of profile. You will notice below on my settings that on smaller Renko sizes it will be checked on

OR off while the longer Renko sizes it should be unchecked. I will go over this on Market Replay in the recorded calls.

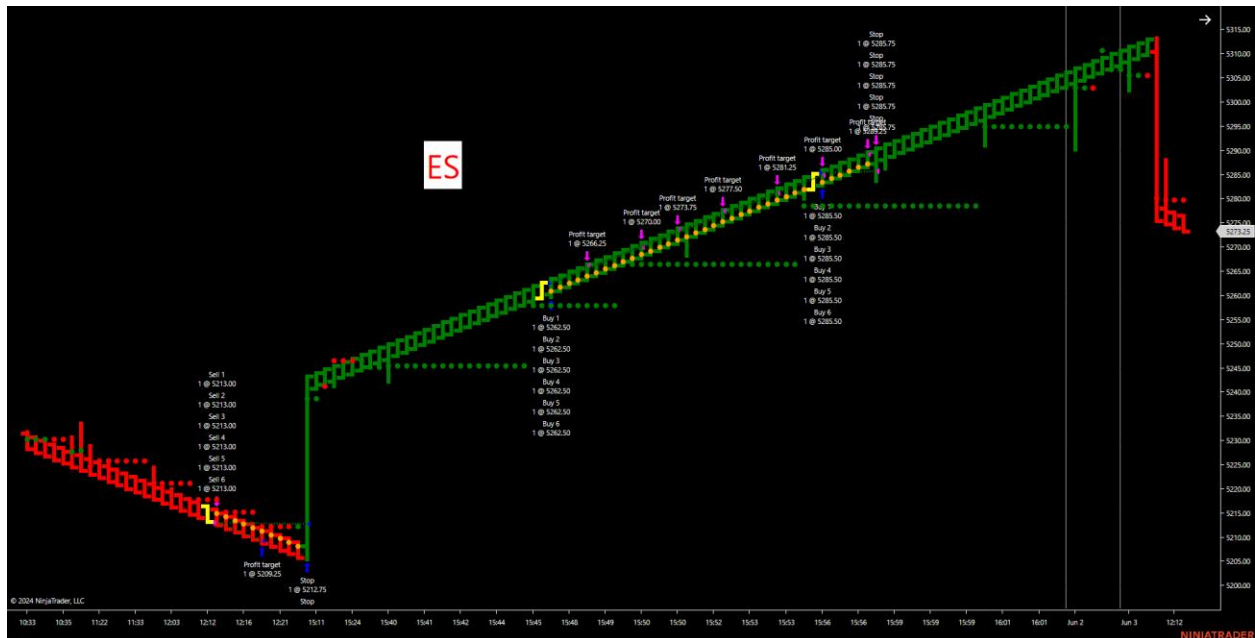
NUMBER OF CLOSES-This is preset as the default of 2 for Zone Breaks.

ATR LENGTH-The default is 20 but can be adjusted for the trailing stop.

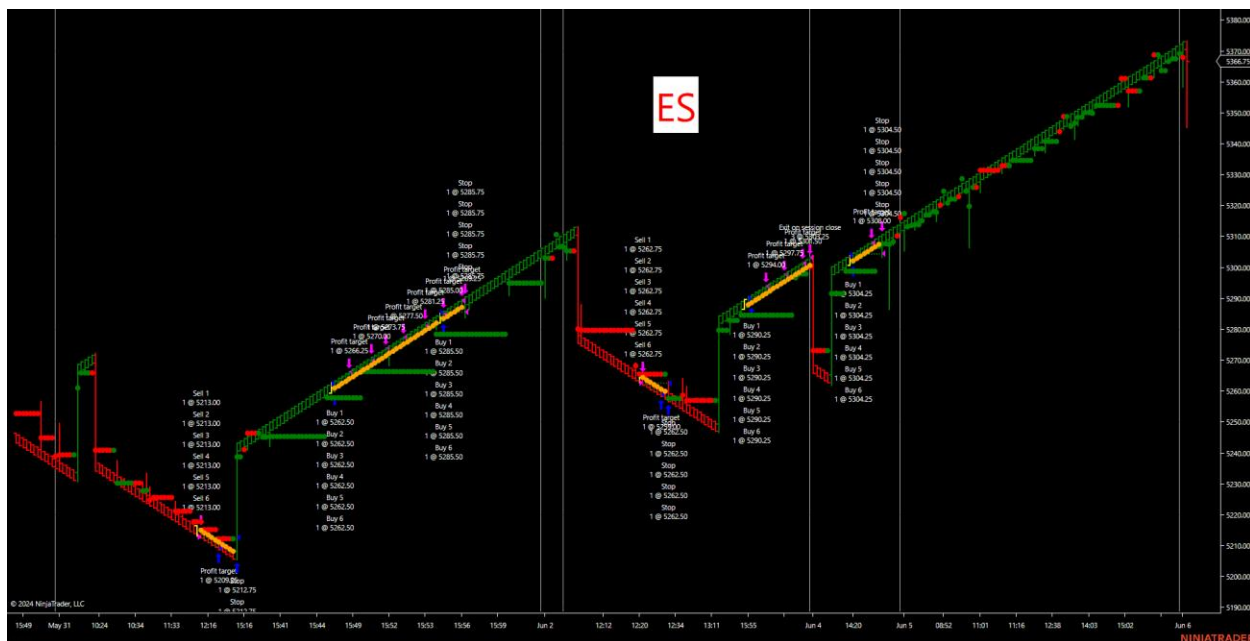
TRAIL TICKS-Trail ticks can be adjusted for the trailing stop loss. Once price CLOSES outside of this Trailing stop, the strategy will exit the trade. This is for shorter and longer Uni Renko sizes.

ENABLE AND DISABLE STRATEGY-The Strategy can be enabled or disabled inside of the strategy by clicking enable or double click on the Ninja Trader connection box. When the strategy is green, its enabled in playback, SIM or Live market conditions.

Now, lets get into settings that can be back tested on the Sym Scalper with Playback or SIM to get all members understanding how to use the system.



ES Smooth Renko Bars are shown above and below.



Uni Renko bars can be used to take most of the noise out of the market when using larger Tick and Reversal settings. In doing that, the market will wiggle, increasing the size of the stop before an ATR is closed outside of or before the hard stop is hit. I like to set the stop high and then let the market close above or below my ATR ticks on the larger Renko sizes. When using the smaller Uni Renko sizes, I like to keep the stop tighter. I will go over the longer UNI Renko bars on a 24-hour basis. Just by adjusting the Tick and Reversal trend on the UNI Renko, minor price swings can be smoothed out.

ES settings to use for Market Playback are below to get users started. Remember, the settings are not the optimized settings when you download the software that you receive nor is the Uni Renko size. Manually insert the following settings to get a starting point and playback the last month on these settings. This is a great starting point and will show the accuracy of the software. The settings can be changed to fit users own reward to risk goals on each market they choose. Past performance is not indicative of future results, this is educational software. It will show the users how the software can be optimized by changing the UNI Renko sizes. Remember, insert the following settings on Ninja Playback and watch it trade over the last 30-60 days to get a feel for the software. The settings that I am showing are to be run on playback around the clock for 24 hours for as many days as the users decides. I educate to go back and Playback at least the last 30 days. I will show all members in the upcoming conference calls and how to optimize to fit the members reward to risk.

HOW TO RUN A PLAYBACK TO SIMULATE LIVE MARKET CONDITIONS

Go to Connections on Ninja Trader and disconnect from any live feed.

Connect to Playback.

Click ES and Download each day from the current day back to 4/29/2024 for instance. You will have to click on every date and click download. You will see it download the data of that date right away. I educate doing all days from 4/29, that's over a month ago before clicking continue. You can download as

many days as possible you need. Going back a month, looking at the setups over the 24-hour period, will give you a great feel for the software. I will help in future conference calls to tell you how to do this too. The test results below on the shorter, intermediate and longer Uni Renko are from 4/29 to 6/15.

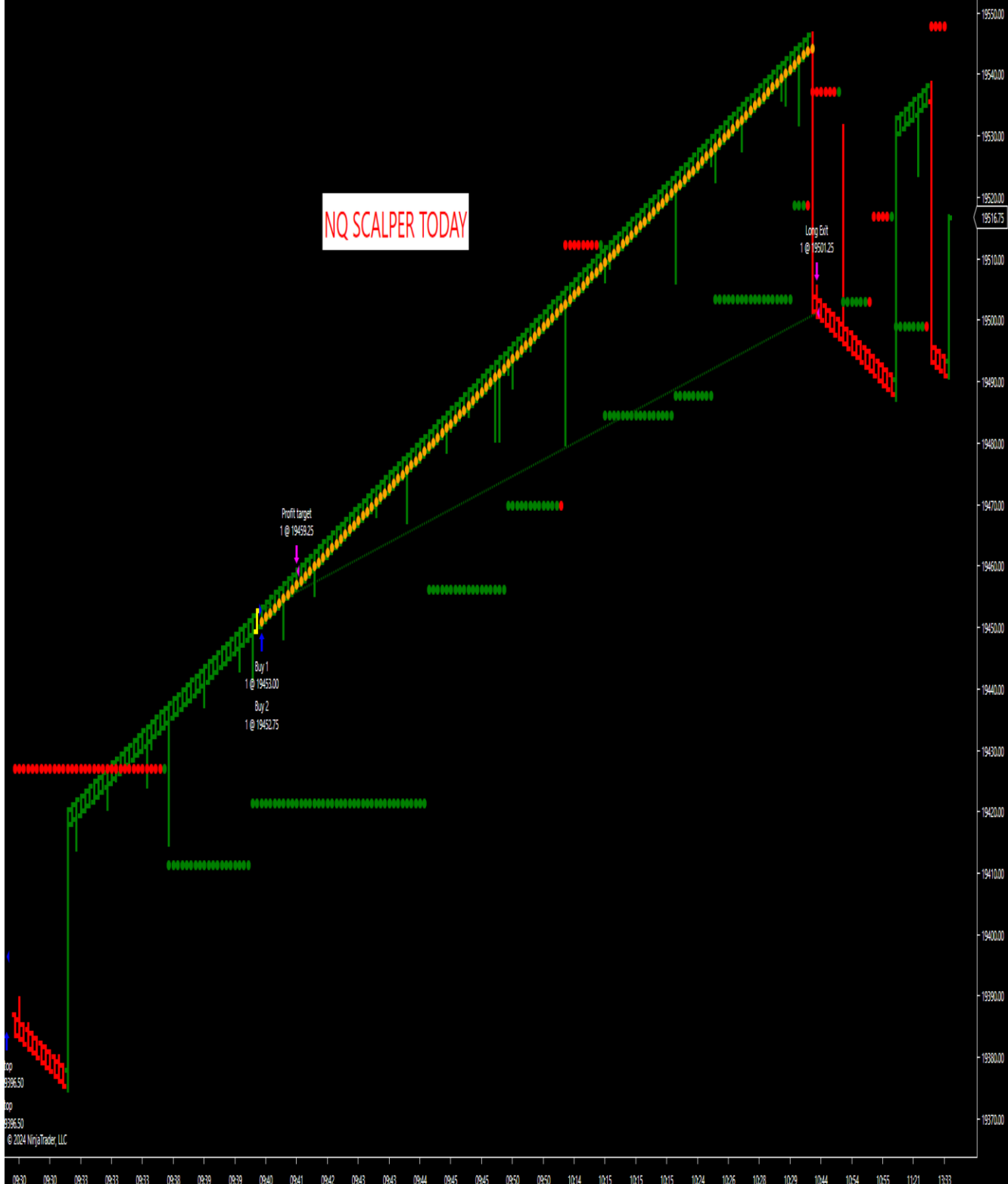
After downloading the Playback data over the last month, turn the Playback on and bring up the following Uni Renko. This will be the longer UNI Renko to take the noise out of the markets. Insert an ES chart with the following settings for Replay. This is for the ES.

Put up 2 charts to compare side by side on Playback. These are smoother Renko settings to take the noise out. Remember, adjust your contract size per your risk tolerance too. Trading all 6 contracts on the large contract can be a substantial loss on a stop below the ATR Trail ticks on a larger Renko size. However, using 6 contracts on the MICROS can reduce risk and still let the strategy work. Adjust the contract size and Micro vs standard contract size.

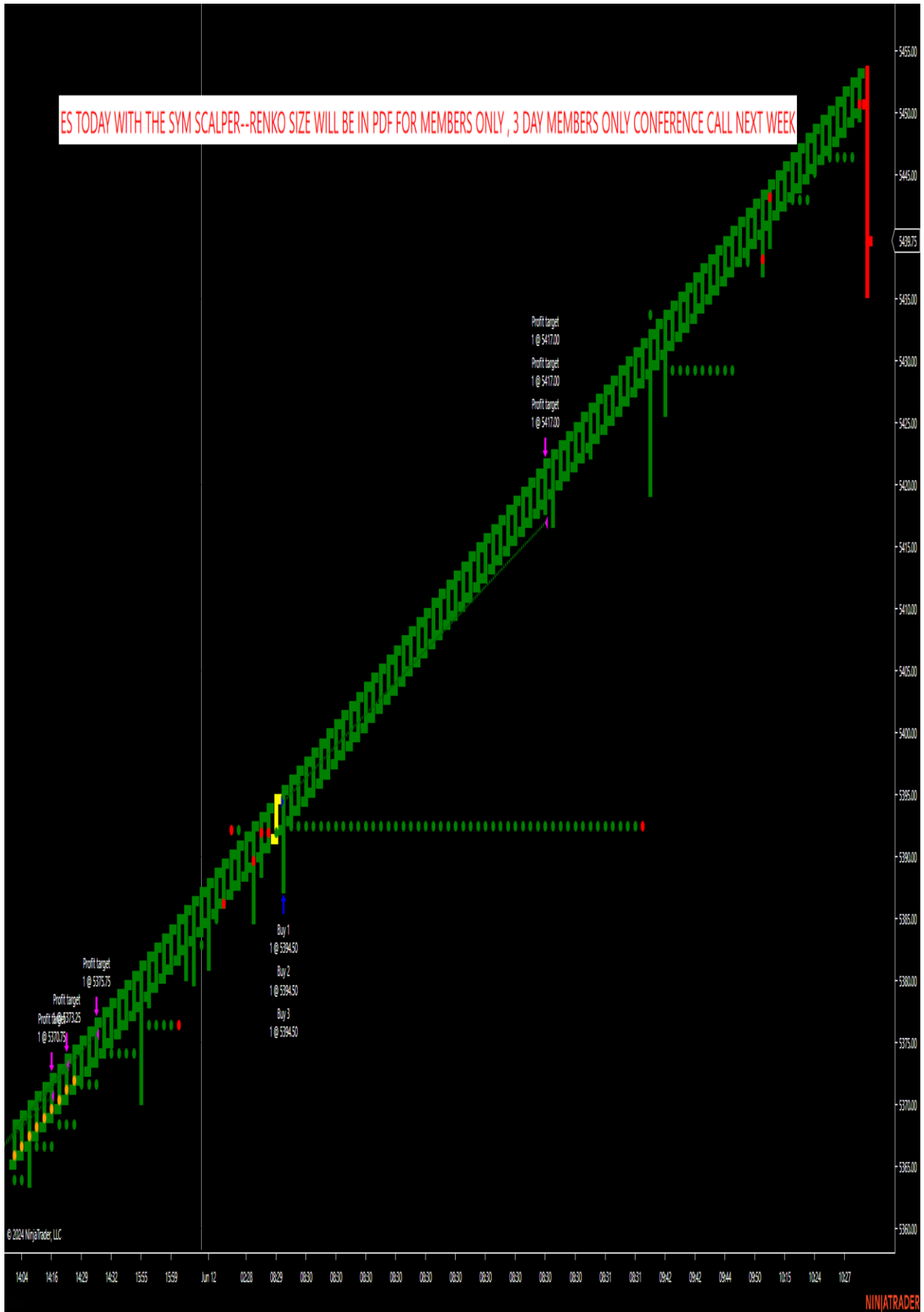
Use playback over the last 30 days, 24 hours a day, to see how the system tracks trades or like I did from 4/29 to current day of 6/17/2024. The Uni Renko smoothed settings are below to get users started. We educate by putting up the charts of the different Renko sizes, side by side and replaying them together to show the difference. Remember, fit the stop to the user's specific reward to risk tolerance. We will go over this on replay in the recorded calls.

Once the charts are pulled up, then insert the Sym Scalper and use the following settings at the end of this PDF to playback the last month to get a feel for the software. Let's look at some recently optimized UNI RENKO settings with the SYM SCALPER. You can playback these settings.

NQ SCALPER TODAY



ES TODAY WITH THE SYM SCALPER--RENKO SIZE WILL BE IN PDF FOR MEMBERS ONLY , 3 DAY MEMBERS ONLY CONFERENCE CALL NEXT WEEK



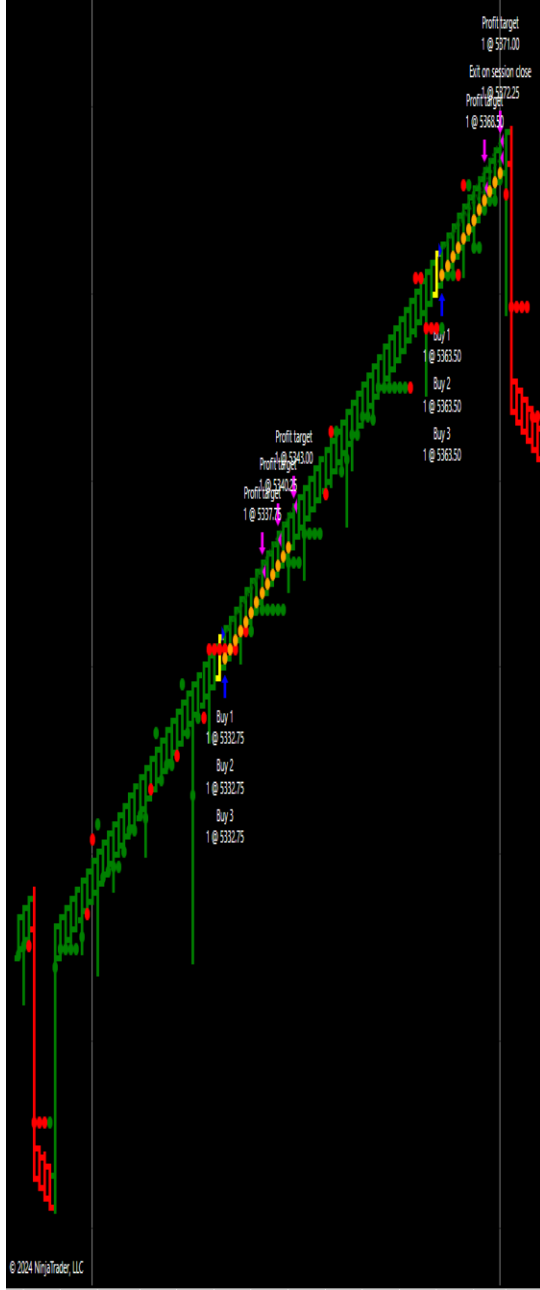
© 2024 NinjaTrader, LLC

NINJATRADER

ES MAY 31st, SMOOTHED UNI RENKO CATCHES THE SHORTS AND LONGS



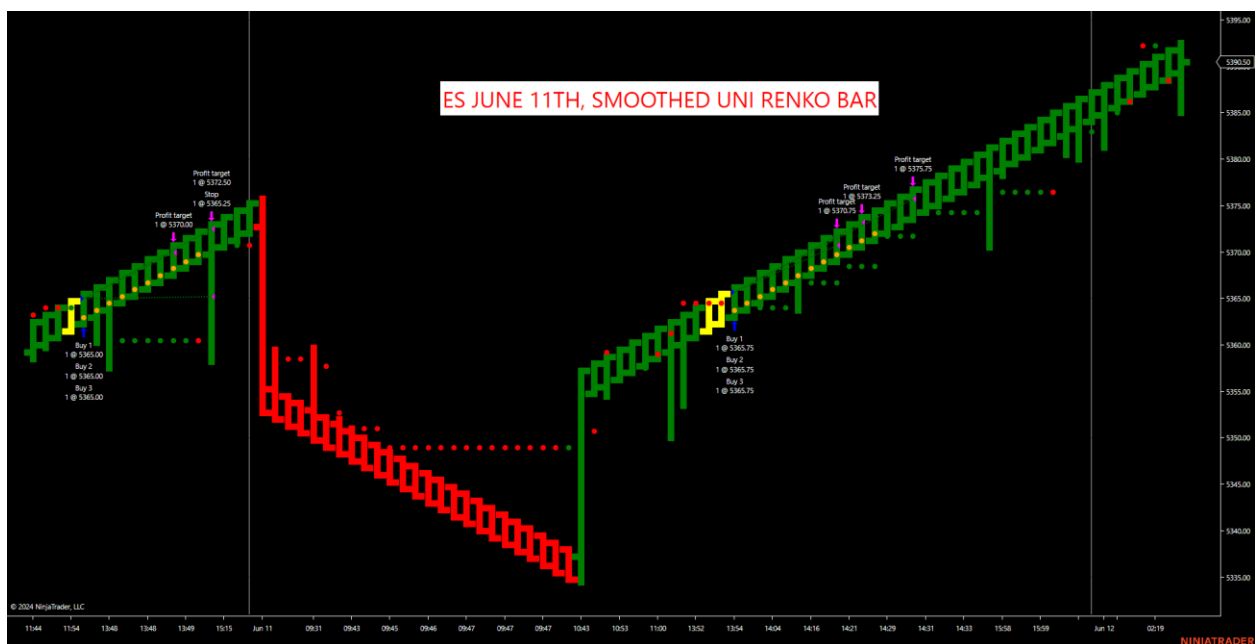
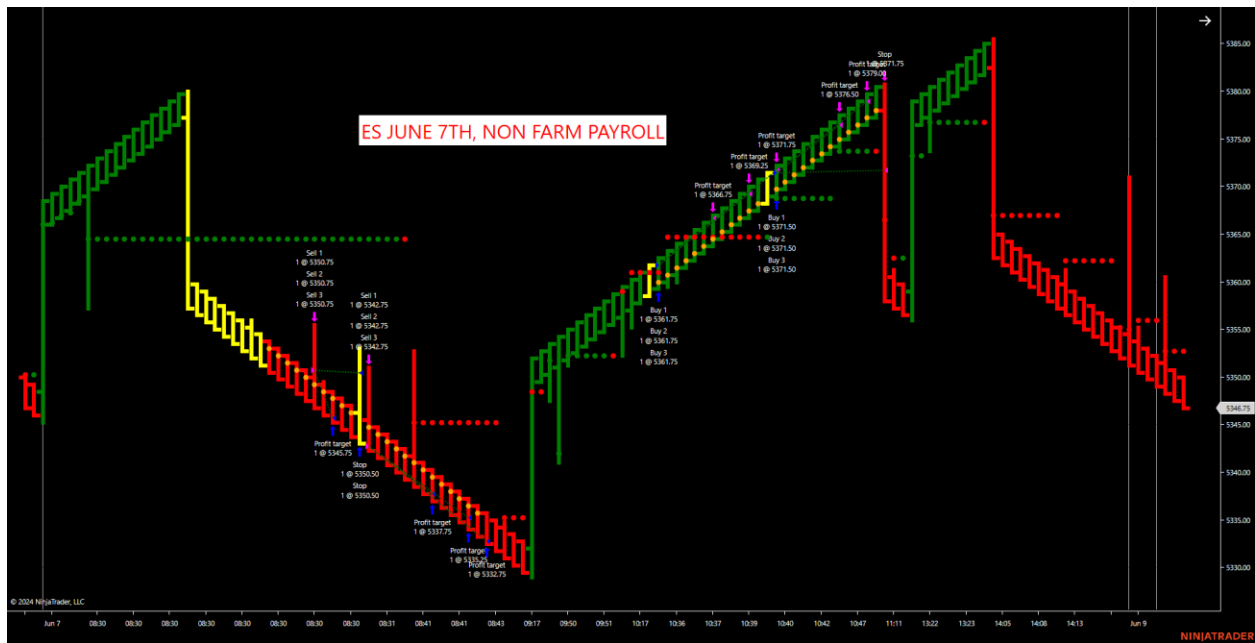
ES JUNE 5TH, ZONE BREAK BUY SETUPS FROM SMOOTH UNI RENKO



ES JUNE 7TH, NON FARM PAYROLL



© 2024 NinjaTrader, LLC



Notice on all the charts above that UNI Renko's have been optimized for the SYM SCALPER. This takes a lot of the noise out of the markets. I will be providing 3 different UNI RENKO SIZE settings below on the ES so members can market replay them to understand how the scalper works. As soon as members get the software, run this week replay on the settings below then go back 30 to 60 days and run them all. I will be doing this in the recorded calls to show you the system. Remember, the ALOG was built for these smoothed Renko bars, not any other bar type. The 3 recorded conference calls are the key. I will show all members optimized settings in 3 different 30-minute video recorded calls. These will be on the members download page. The calls will take place June 26th, June 27th, 28th at 815am. These will be recorded and placed on the MEMBERS ONLY download page. If you get this PDF BEFORE THE RECORDED CALLS, then

simply scroll to the bottom of this PDF and insert the Renko sizes and settings on separate charts and REPLAY THEM ALL TOGETHER to get a feel for each individual Renko size. This will get everyone off to a great start with the ES. Let's look at the 3 settings. Short, intermediate and then a longer Renko.

Insert the Sym Scalper on the charts with the following settings at the END OF THIS PDF and REPLAY. Let's break down the settings and what they mean first.

Trend-Default 5 min. If users want to override the default built in trend settings, simply insert it. Example, some users like the UNI Renko 1/65/65 as the trend filter instead of the standard 5min. chart. I educate traders to leave it on the 5-minute setting and test my settings at the end of this PDF first then adjust if needed.

ATR Trail ticks-Default of 10

2nd ATR Trail ticks-Default of 10

Target 1-6 (these can be adjusted from 1 to 6 contracts)

Start Time-1:30:00 (assuming 830 news, adjust to 8:33:00 as an example), **Stop Time**-1600(est. time)
This can be adjusted to users' preference.

Stop (The trail ticks close will exit the position when closed below. I will go over this in our 3-part recorded call to adjust to users' preference. What ever comes first, the hard stop or the close outside the trail ticks' dots)

****This is very important. All traders will want different stops and drawdowns. Adjust the stop lower until you get the performance needed with the drawdown needed. I just put a standard 75 ticks on all the Renko sizes to make it universal on the ES so users can compare Renko sizes****

The stop can be lowered on replay to fit the drawdown needed for account size. Adjust the stop lower to do this and see the accuracy by adjusting the stop and to see the difference in the drawdown. Adjusting the contracts and doing Micros vs standard contracts helps too.

BE+1-checked (this can be unchecked or checked. I prefer it to be checked with smooth Renko bars.

Counter-Unchecked (The longer Renko settings below of 3/10/150,3/10/210 and 3/10/240 I educate to leave unchecked because they are typically Zone Breaks with hard trend.

Number of closes-Default 2(this is standard for the closes above or below the ZONE BREAK out)

ATR Length-20 (This is a standard ATR but can be adjusted)

Trail ticks-20(This is on a closing basis. If the price bar CLOSES outside of these YELLOW TRAIL DOTS, the strategy will exit all contracts. If you want it to hug price, insert a 10

NUMBER OF CONTRACTS IS UNDER ORDER HANDLING.

The number of contracts will be 2 that the strategy will test in this example, however, you can test up to 6 contracts OR as low as 1 contract and of course change the targets and stops and ATR trail ticks to anything you want. This can change your overall performance and drawdowns. Remember, Micros are 1/10th of the big contracts.

The number of contracts will directly affect the drawdown too. Lower the contracts and stop until they meet the user's trading preference. Both the stop and contracts will directly affect the drawdown. Remember, Micros are 1/10 of the big contract for losses and gains. Users will notice that the longer smoothed Renko sizes can reduce drawdown with the micros.

Go to order handling and change the entries per direction in the strategy to reduce contracts and you're your own reward to risk. This will be right under the ENABLE toggle inside the strategy. The targets and stops can be adjusted to fit the users desired settings. This will just show how the strategy works 24 hours a day. When the strategy is checked under ENABLE it will TURN GREEN. If it is YELLOW when the strategy is turned on, that means it's in a trade setup and will wait for the next one. If the strategy is not green, then it is off. The strategy can be double clicked under the Ninja Trader control panel under strategies or right clicking on the chart, enabling the strategy toggle switch and applying.

Run the above settings on the ES from 4/29/2024 to the current date. You can Playback longer if needed. This is enough data to get a feel for the software. **These are for the ES or ES micros.** Here are some recent charts of the ES on smoothed optimized Uni Renko settings.

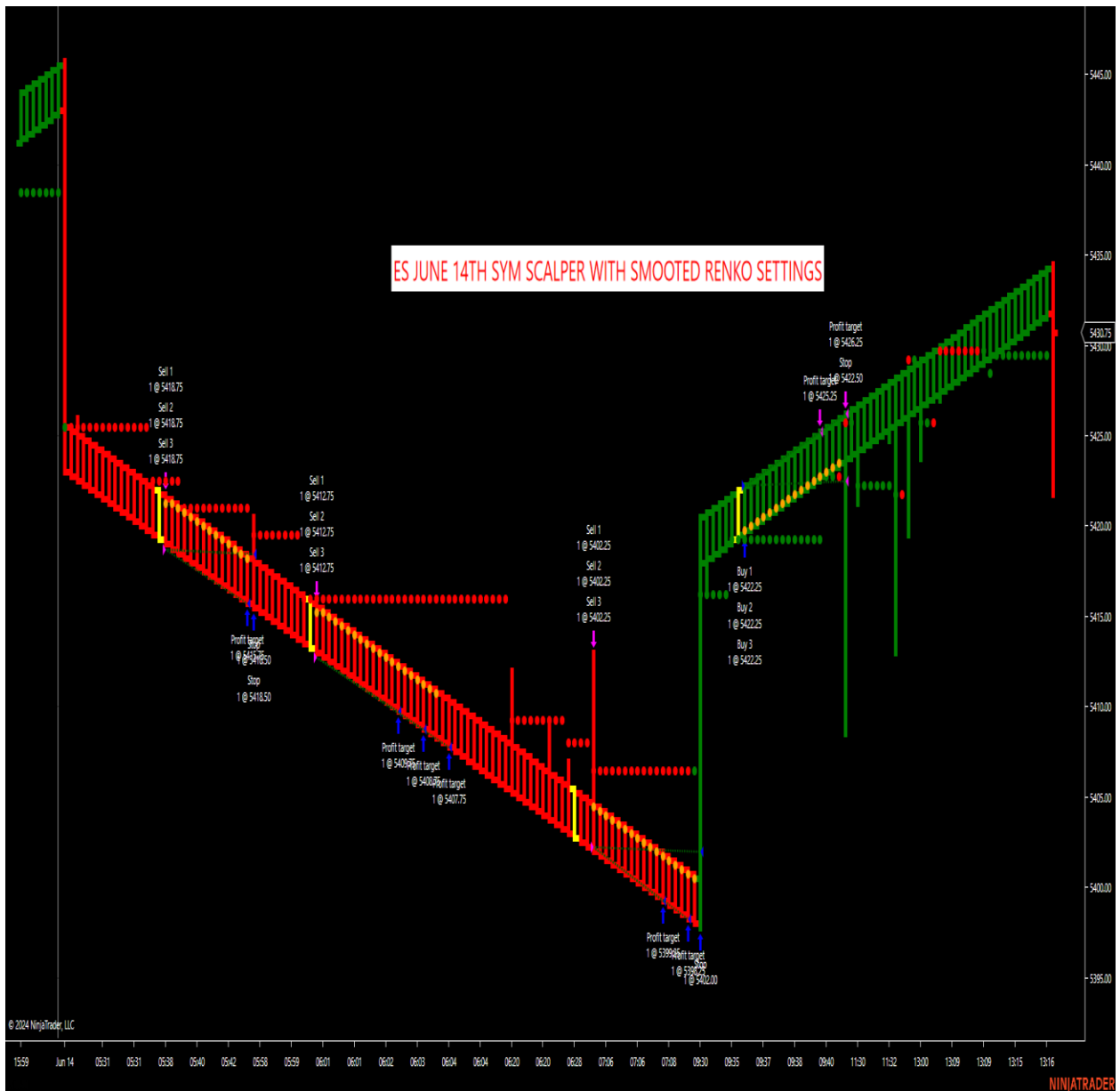
ES, JUNE 13TH SYM SCALPER ON SMOOTH RENKO CHART



ES JUNE 12T, SYM SCALPER SMOOTH RENKO SETTING

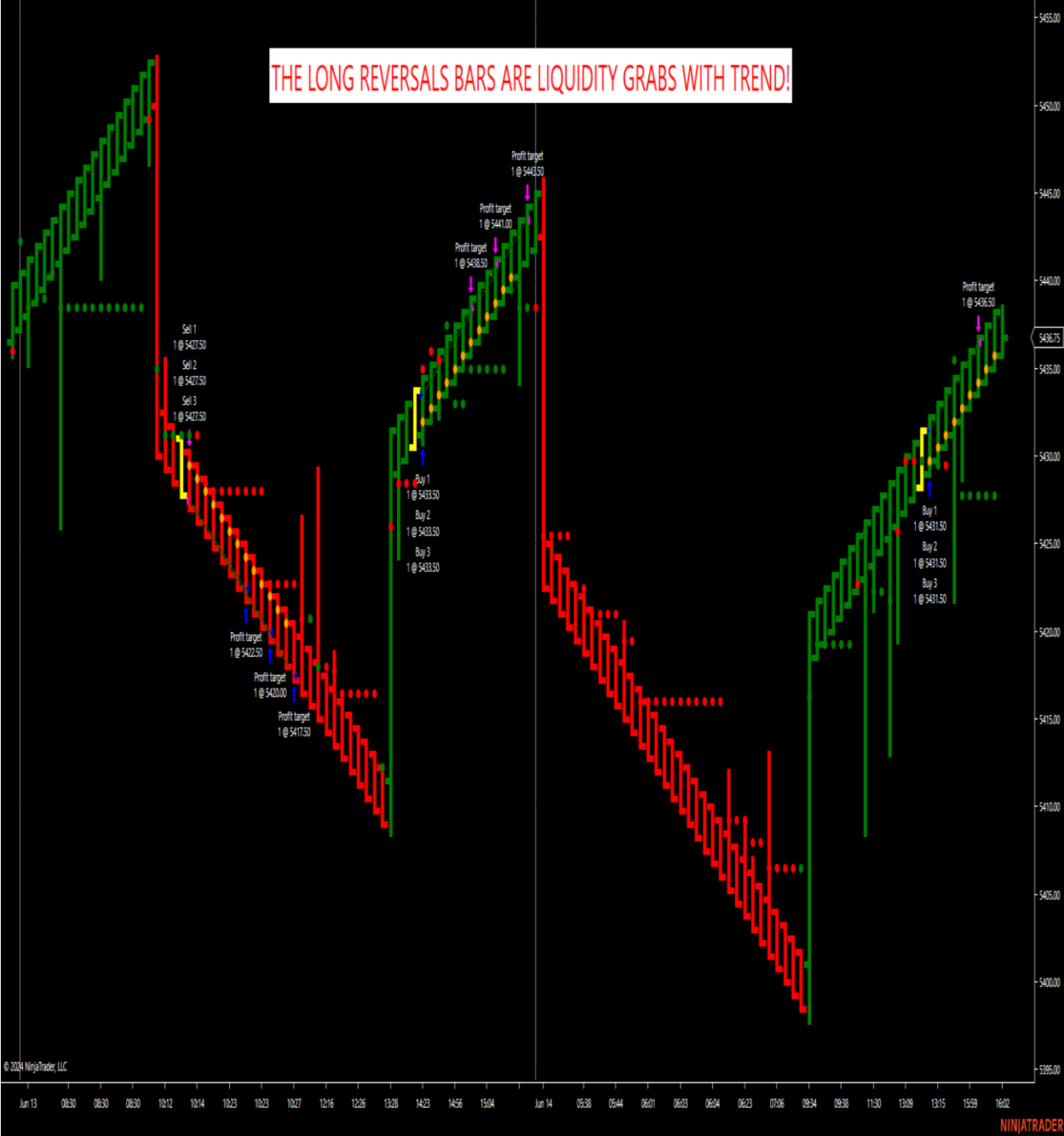


ES JUNE 14TH SYM SCALPER WITH SMOOTHED RENKO SETTINGS

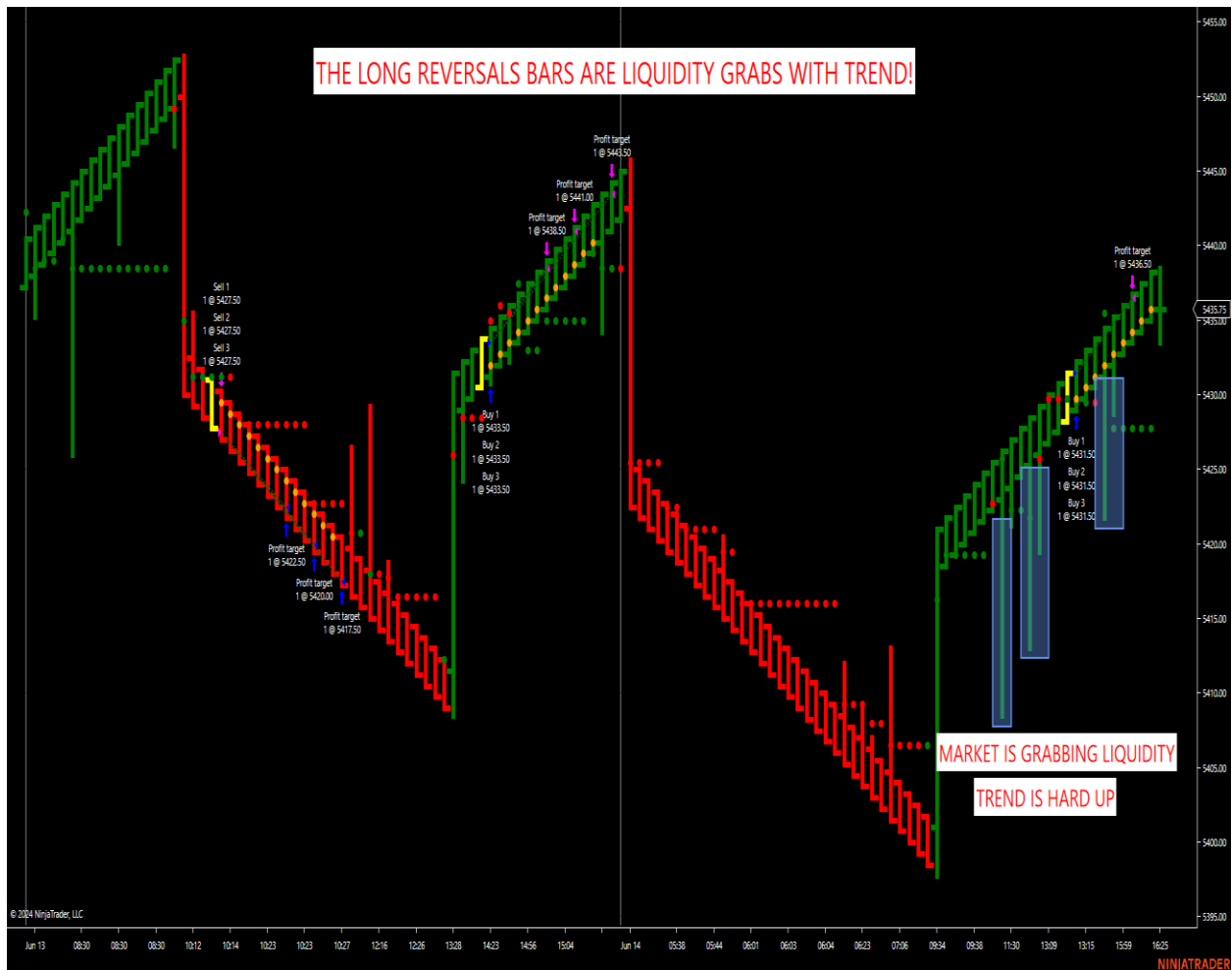


© 2024 NinjaTrader, LLC

NINJATRADER



June 14th liquidity grab before the big push up!



The great advantage of smoothed Renko bars is that they spot when potential LIQUIDITY GRABS are occurring. I was showing this trade live in the room to members on Friday, June 14th at the close during power hour. I showed them the long bar that was red but did not close. This is the first indication of a liquidity grab where there is a pullback in a hard uptrend. The counter trend traders get taken out then the smart money grabs liquidity and drives the market up. This is exactly what happened when the traders were watching the live action on Friday. They pulled the market back with a fake intra red bar then closed it green again for a hard liquidity grab trend. The strategy hit its target. This occurs daily in the markets. Some traders do not even like to strategy trade, those trades can use the strategy to fire these setups to get the hard trend direction then check down to a lower Reko size for smaller stop same direction entry. Others may elect to strategy trade only with the smoothed Renko bars. Either way, traders can customize their settings to fit their reward to risk tolerance. The key to the Algo is the smoothed Renko sizes that are inputted and the stops and targets in the parameters because all the setups are built in the system. This includes ZONE BREAK, SLING SHOT and FAILURE SETUP!

In this PDF, I show the small, intermediate and longer smoothed UNI Renko bars to be used with the Sym Scalper on the ES. We will be showing detailed settings on the MEMBERS ONLY

conference calls that will be recorded on the Members download page. We are shutting the room down to members only to go over the CL, NQ, YM, ES, RTY and other markets.

Remember, this SYM STRATEGY is not a plug and play on all time frame bar charts. This was specifically programmed to catch smooth trends with our ZONE BREAK and SLINGSHOTS and the counter Failure setups with smoothed Renko settings.

Some markets will have the Counter check and others will not. This will depend on that specific market's volatility outside of the news. I will go over this in the recorded conference calls.

The best way to get familiar with the software is to apply my shorter, intermediate and longer Renko settings at the END OF THIS PDF and use PLAYBACK on them before our conference call. I included them in this PDF to be run on the ES!

Then Play those settings on SIM when the market opens Sunday night at 6pm and let them run SIM live 24 hours a day until our call. If traders did this on June 17th, the first trading day after the release of this PDF, you would see the results below with the charts enclosed on the shorter, intermediate and longer smoothed Scalper settings. This will help a lot of traders to see the setups and how they work.

REPLAY

4/29 TO CURRENT DATE OF 24 HOURS OF ALL TRADES TO JUNE 17TH.

Download Playback for the ES from 4/29-today of 6/17. This will look at all trades from 130-1600est. everyday.

Pull up separate charts

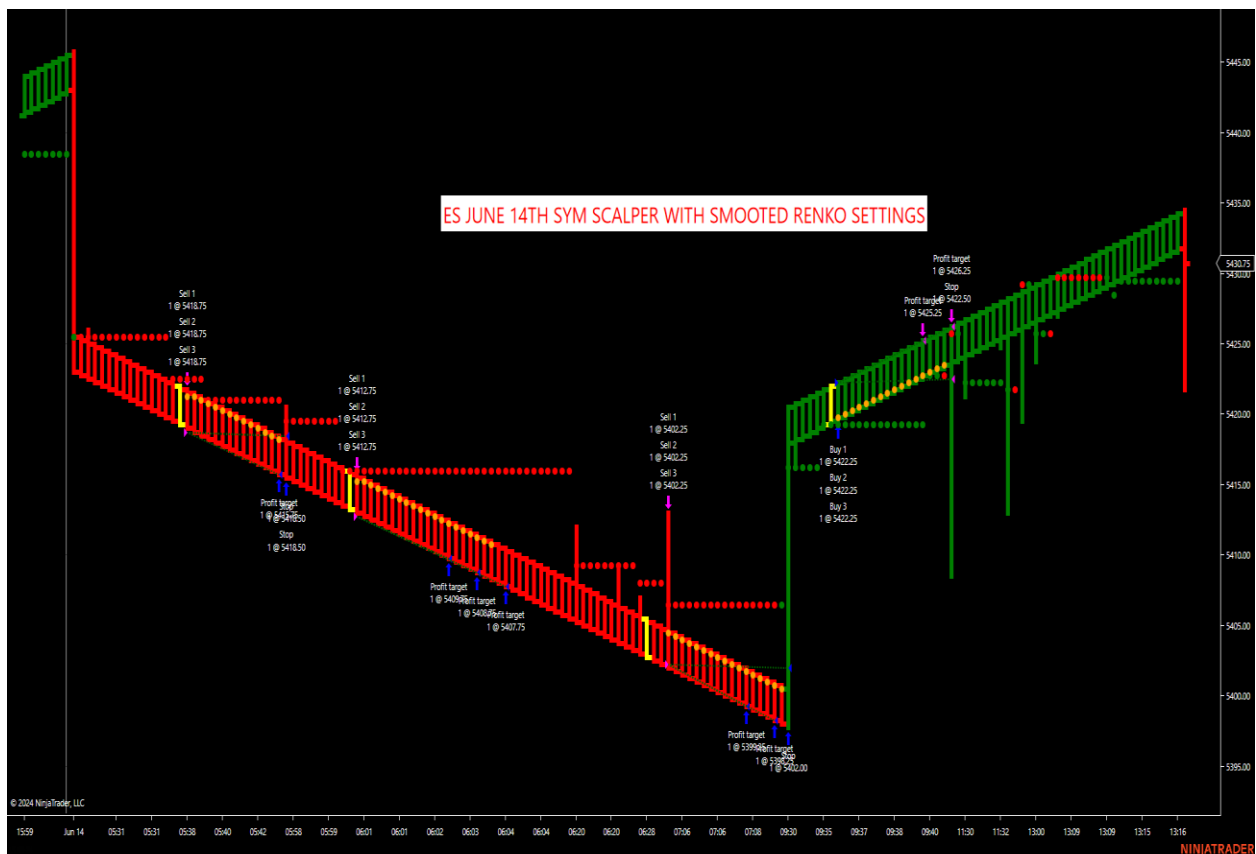
3/10/240, 3/10/210, 3/10/150 with the settings below and run them 24 hours a day or the 130-1600 est. as instructed. The settings are below to insert. I would run all these charts beside each other to get a feel for the different Renko sizes. Remember, the longer Renko sizes can work through chop and trend because it's a smoother Renko.

THE SCALPER WAS PROGRAMMED FOR SMOOTHED RENKO SIZES. IT WAS NOT PROGRAMMED FOR THE NOISE SETTINGS OF A STANDARD 1/10 OR 1/20 OR 1/35 CHART. They produce too much intraday noise. The Scalper also spots LIQUIDITY GRABS, where those smaller charts cannot

Now replay this from 4/29 to present day and watch the setups. Watch the largest Renko that was optimized to the smallest with the settings at the end of the PDF.

As of this writing just DOWNLOAD JUNE17TH for the ES and playback all the Renko sizes and put them beside each other. Right away you will see the difference in Renko sizes and then go back to 4/29 to 6/17 for the larger test. By testing just 1 day like the REPLAY of JUNE 17th, users can get a feel for all the Renko sizes right beside each other and you can slow down the replay to watch the executions via the different Renko sizes. Test the settings below with the different Renko sizes in playback.

Some traders will want to use the Sym Scalper as a heads up of a potential larger move going on with the market. Those users can use the Sym Scalper to fire the setups on the longer smoothed Renko on SIM, then go down to a smaller Renko entry to lower the stop and enter off that lower Renko in the same direction as the larger trend entry that can push the market. These are traders that want to use the SYM SCALPER as a tool to indicate a big push maybe coming but enter using CHART TRADER for their entry and to manage their position. An example was the live room on June 14th. Notice when the larger reversal candles occur. This is typically when a liquidity grab is taking place. If a big red down bar is forming on the smoothed Renko but it goes right back up before closing red and closes green, this indicates a liquidity grab is taking place and the market is trying to mark the market up. If a big green candle is forming in an all-red downtrend but then closes right back red, indicates the market is trying to mark the market down and a short position should be taken on a smaller Renko size. This is when traders should focus on ANY ZONE BREAKS. If a larger liquidity grab occurs, watch for ZONE BREAKS to accelerate price in that direction. I showed this live in the room as it was developing on June the 14th.



The above chart was June 14th. Notice how smoothed UNI RENKO setting. This software was designed to take the noise out of the markets with optimized Uni Renko sizes specifically designed for strategy trading.

NEVER RUN THE STRATEGY THROUGH NEWS EVENTS. IT WILL SHUT DOWN. Always remember, if the strategy shuts down then Ninja cannot keep up with the stop adjustment. If users are running a MAX replay with real small targets or 1 or 2 ticks to scalp, the replay will typically shut down because it cannot

adjust the stop fast enough on replay. Increasing targets can help. **Always look to see if a position is still open if the strategy shuts down. Smaller Renko sizes can be used for news events ONLY AFTER news has settled for 2 to 3 minutes. The same goes with the New York open if trading the NQ.**

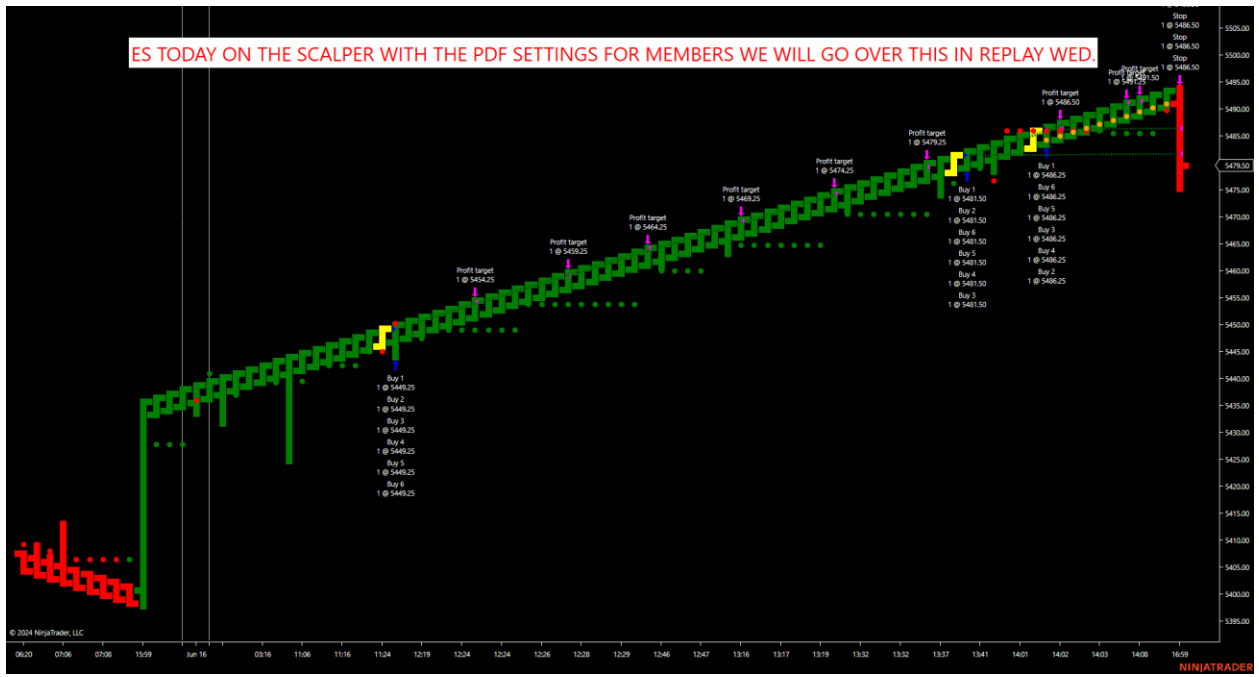
Remember, larger Renko sizes can smooth out noise daily while the smaller UNI can try and capture the swings after monthly news events such as Non-Farm, CPI, PPI, Retail Sales, GDP, Fed minutes and Fed rate announcements. By changing the Trend and Reversal UNI RENKO settings can be optimized to the Users reward to risk tolerance.

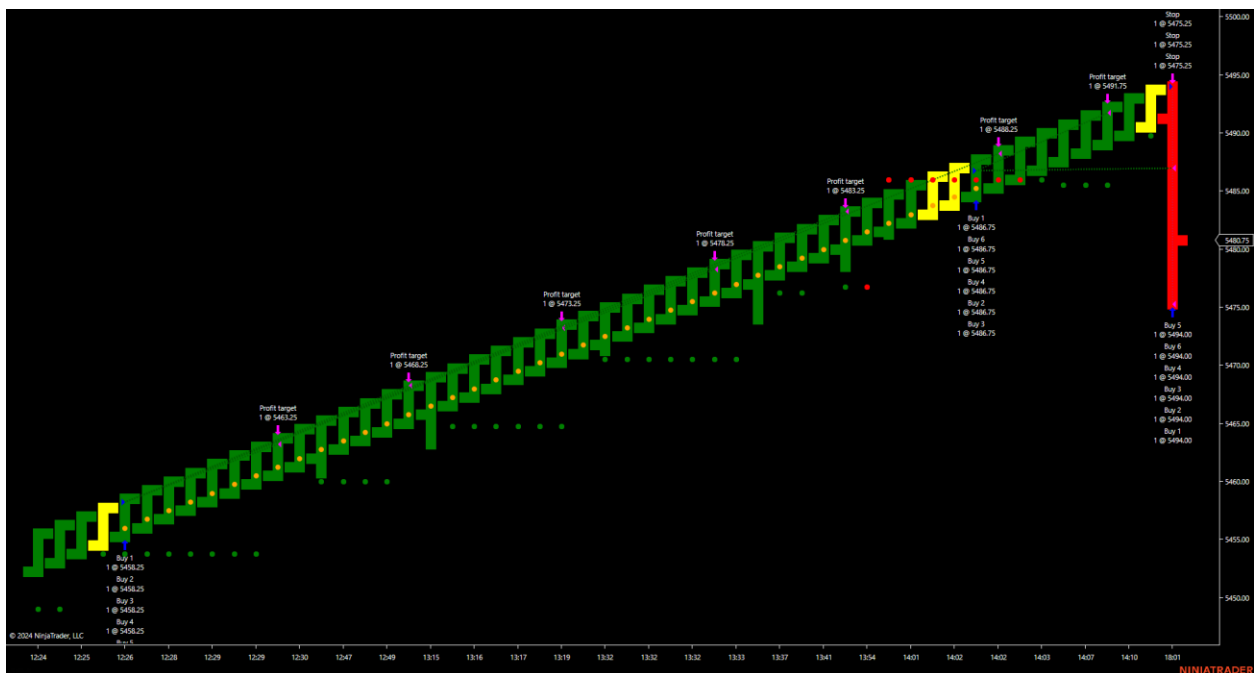
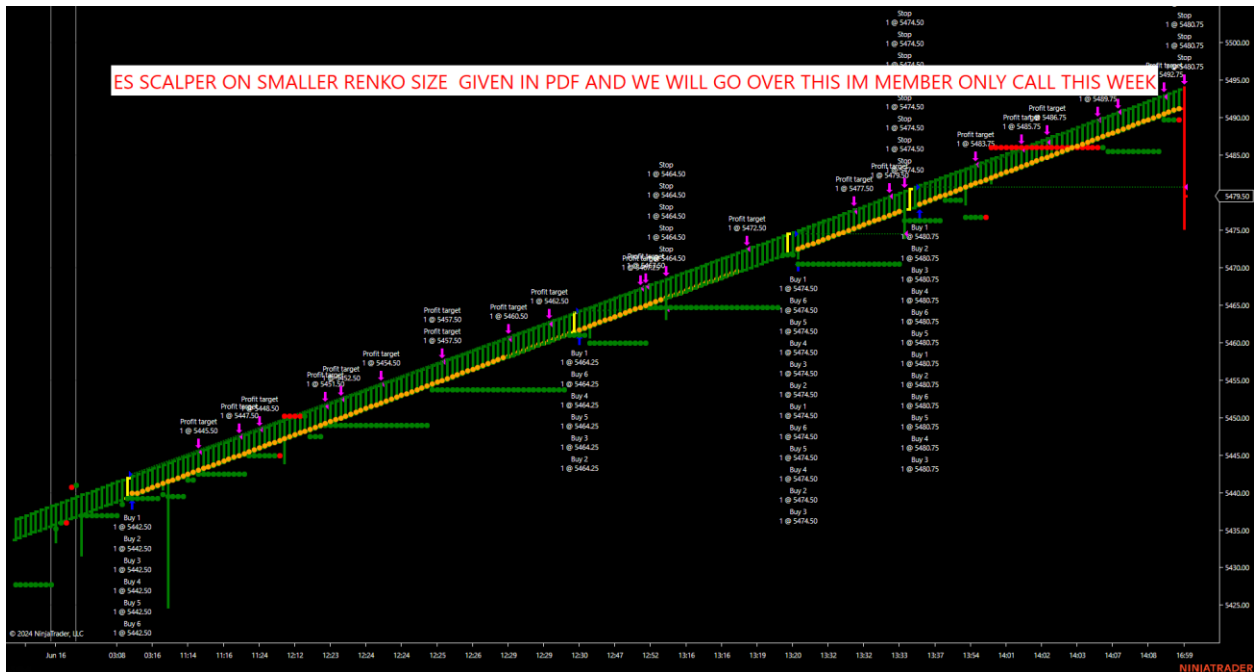
Remember, Micros are 1/10 of the large contract and are ideal after SIM and Playback testing has been done. I educate that once you get a good Playback result of the past 30 plus days, then SIM it with live SIM data. Once that confirms it then the next up are the MICROS if the user decides then the big contract. That is the process.

The 3-day training recorded calls are crucial to the success of using the Scalper. This will be on June 19th, 20 and 21st. If you are reading this after those dates, then the 3 ,30-minute calls will be on the members download page on the software. The Scalper software is useless if the user does not use optimized settings. It was programmed to be used with smoothed UNI RENKO OPTIMIZED settings. YES, you can tweak the settings. Some members will find better settings with very different targets and stops. That's great and that's what we want, we love to see traders having success with the software. We do not say that this is the only UNI RENKO size to use. Instead, we educate how to use the Scalper with these smooth Renko settings to assist any trader with his or her trading goals.

We will run Market Playback on these settings and record them to make sure all members are doing everything correctly next week in our 3-day call. Remember, more optimized settings will be coming with other markets at the call. We will go over the CL, NQ, RTY, YM, ES and other markets. Once you understand the Scalper, I will show you how you can customize and optimize settings on ANY MARKET to fit your reward to risk. Additionally, I will show how to SCALP with the SCALPER in those recorded calls.

Let's take a look on June 17th with the Smallest to Largest Renko sizes. Notice the difference between them.





Notice all the setups on June 17th on the ES. These were the smallest Renko settings to the largest Renko settings in this PDF below. I will go over this in the 3 recorded conference calls for MEMBERS ONLY and it will be on the members download page. The key is to ADJUST THE STOP! I will show all how to do this in the 3 day recorded calls.

REMEMBER, WE WILL HAVE A 3 DAY TRAINING SESSION FOR MEMBERS ONLY ON THE STRATEGY THAT WILL BE PUT ON THE MEMBERS DOWNLOAD PAGE. IF TRADERS ARE CONFUSED, PLEASE PLAY THOSE.

THIS PDF DOES NOT GO OVER ALL THE PITFALLS OF STRATEGY TRADING SUCH AS IF THE COMPUTER GOES DOWN ETC. DO YOUR DUE DILIGENCE ON SIM BEFORE CONSIDERING LIVE MARKET ACTION. THIS IS EDUCATIONAL SOFTWARE SO WE DO NOT REPRESENT THAT THE REPLAY RESULTS IN THE PAST WILL PRODUCE THE SAME RESULTS IN THE FUTURE.

SUMMARY OF PLAYBACK SMOOTHED RENKO'S TO TEST STRATEGY

INSERT THESE SETTINGS WITH THESE RENKO SIZES ON SEPARATE CHARTS BESIDE EACH OTHER ON THE ES. THEN COMPARE RESULTS.

RECAP STARTING SETTINGS TO TEST. THIS REPLAY FROM 4/29 TO 6/18, 24-7 EOD unchecked on Data

****Remember, past historical results or playback results are not indicative of future results. This will show the potential of the Sym Scalper Strategy****

Setup all these Uni Renko sizes and Playback them together to compare results. We will show larger stops and contracts first then smaller stops and contracts for smaller drawdowns. Put up both parameters on the 3/10/240 on two separate charts and compare the results. Smaller stops=smaller drawdowns. Larger stops will keep most trades in deep retracement liquidity grabs. This will be up to the user. I put two different parameters below each other to compare the two. We show max stops of 75ticks and as low as 15 tick stops for the same Renko size. We will do this in the training call to show the difference. Users can change the contract size, Micro or standard and stop to match their own reward to risk. Remember, we provide educational software, and no representation is being made that the performance below is indicative of the same future results. Remember, to visit our risk disclaimer before testing the software. We have traders sign the disclaimer, so they understand the risks associated with strategy trading.

Here are the 3 optimized smoothed Renko settings for the Sym Scalper.

3/10/240

This will be the larger stop that will have a potential of a larger drawdown with higher reward. The next parameters below will have a smaller stop and a lower drawdown and lower reward. Just by adjusting the contract size and stop, drawdowns can be customized to the user. Compare results of these two parameters using the same 3/10/240. Here is the first one to insert on a chart to test.

Trend-5min

ATR Trail Ticks-10

2nd ATR Trail ticks-10

T1-20

T2-40

T3-60

T4-80

T5-100

T6-120

START TIME-1:30:00

STOP TIME-16:00:00

STOP TICKS-75(this will be the largest stop on the 3/10/240, below we will show a much smaller stop and results below and in recorded call)

BREAKEVENPLUS1-CHECKED

COUNTER-UNCHECKED

NUMBER OF CLOSES-2

ATR LENGTH-20

TRAIL TICKS-10

ENTRIES PER DIRECITON UNDER ORDER HANDLING-6

PERFORMANCE PLAYBACK RESULTS-23,537, 100%, 60 Winning setups. This is due to the large stop of max of 75ticks to withstand the liquidity grabs. The large contract showing 6 contracts has larger potential but also potential large loss. Going to Micros with this will reduce the profit and loss by 1/10th which can help with drawdown. Reducing contracts down, will help with drawdown when it occurs. This is the max loss to show how the strategy can work. Below you will find stops of 15-30 ticks with the same 3/10/240. This will be up to the user to find the setting to meet their own reward to risk.

Set up a 2nd chart for the 2nd Parameters for the 3/10/240 with a much smaller stop and lower drawdown. We will be showing less contracts and lower stops to achieve this. Remember, the Sym Scalper has all the setups built in, the user only needs to change a few parameters to fit their reward to risk. Contract size, hard stop, Micro vs Regular and Renko sizes all contribute to this.

Trend-5min

ATR Trail Ticks-10

2nd ATR Trail ticks-10

T1-8

T2-1000 (this will be tested with 2 contracts only)

T3-60

T4-80

T5-100

T6-120

START TIME-1:30:00

STOP TIME-16:00:00

STOP TICKS-15 (Users can adjust the stop to 30 to compare with same parameters, if adjusting to max 75 ticks then move the target1 and target 2 back to t1 at 20 and t2 at 30) We go over this in the first training recorded call.

BREAKEVENPLUS1-CHECKED

COUNTER-UNCHECKED

NUMBER OF CLOSES-2

ATR LENGTH-20

TRAIL TICKS-10

ENTRIES PER DIRECITON UNDER ORDER HANDLING-2(change contracts to 2)

PERFORMANCE PLAYBACK RESULTS (4/29-6/18)-Between 87% to 100% with stops of 75, 30 stop and 15 stop. We show this in our first recorded training call on the members download page.

Let's now do 1 contract on the 3/10/240 with a 10-tick target and a 30 tick stop with all the parameters the same above.

90%, 19 wins, 2 losses (this is in the first training session on our recorded call to show the difference in contract sizing)

3/10/210

Trend-5min

ATR Trail Ticks-10

2nd ATR Trail ticks-10

T1-8

T2-1000 (only 2 contracts on test)

T3-30

T4-40

T5-50

T6-60

START TIME-1:30:00

STOP TIME-16:00:00

STOP TICKS-15 (I show 15, 20, 25 stop in recorded first training call) Rememer, if you want to do 1-6 contracts and put in as high as a 75-tick stop, then put target 1 back 15 or at least show larger targets if taking larger stop risk, then target2 back

to 20 or larger then t3-30 etc. Some users that like Micros will prefer these larger contracts with larger targets due to the 1/10 profit and loss ratio. We are showing you just because you use a larger smoothed Renko size, does not mean you must do a max 75tick stop. We show in the first recorded session, stops can go down to 15 ticks and still show performance. We show this in the first recorded call for users to playback)

BREAKEVENPLUS1-CHECKED

COUNTER-UNCHECKED

NUMBER OF CLOSES-2

ATR LENGTH-20

TRAIL TICKS-10

ENTIRES PER DIRECITON UNDER ORDER HANDLING-2

PERFORMANCE PLAYBACK RESULTS-Between 83%-93%. We show the actual playback numbers in the first recorded training call on the members download page. This shows each stop from 15stp, 20stp, 25stp and 30 stop.

Notice changing the targets, stops and contracts on both the 3/10/240 and the 3/10/210 will change results. The ATR yellow dots will have to be closed outside of by a closing bar before the position is stopped out or the hard stop hit, whichever comes first. Larger contracts have a high reward but also high risk due to the drawdown possibility. Micros are 1/10 of the profit but also the loss which some users may prefer when using larger targets and contracts. These are just examples of what the Sym Scalper can do. Users can fit their reward to risk by adjusting the contract size and by moving from large contract to Micros with the same targets and Renko sizes. The 75 stop was optimized as a max stop for Micros. Let's go over smaller Renko sizes to test. Remember, users can fit to their own reward to risk which I will go over in our recorded calls

Larger Renko sizes such as the 3/10/210 and 3/10/240 are great in chop and trend markets because they take a lot of the noise out. If trading minutes after news, smaller Renko sizes with smaller stops are ideal. We go over this in our recorded

first training series on the members download page. These are 3 parts, 30 minutes each, training series that go over all these Renko sizes that we are going over in this PDF. Play the first recorded series to see smaller Renko sizes that can be used minutes after NEWS events. These are the best times to use the smaller Renko sizes because typically after news, the markets like to go vertical and are very volatile in the first 45 minutes after the news release. We went over this in our first training call.

3/10/150

TEST WAS FROM 4/29 TO 6/18. 24 HOUR CHART, EOD UNCHECKED.

TREND 5 MIN.

ATR TRAIL TICKS-10

2ND ATR TRAIL TICKS-10

TARGET1-8

TARGET2-1000 (2 TARGETS WERE USED IN THIS TEST, CHANGE UNDER CONTRACT SIZE)

TARGET3-45

TARGET4-60

TARGET5-75

TARGET6-90

START TIME-1:30:00

STOP TIME-16:00:00

STOP TICKS-15 tick stop or 30 tick stop These were the two best optimized stops that you can compare with all parameters being the same.

BREAKEVENPLUS1-CHECKED

COUNTER-UNCHECKED

NUMBER OF CLOSES-2

ATRLLENGTH-20

TRAIL TICKS-10

CONTRACTS-2 (CONTRACTS WERE SET TO 2, 8 TICK FIRST TARGET, BE+1 AFTER FIRST TARGET IS HIT AND 1000 TICK 2ND TARGET WITH TRAIL)

RESULTS

88% ON THE 30 TICK STOP AND 74% ON THE 15 TICK STOP. I WILL SHOW THE RESULTS ON THE FIRST RECORDED TRAINING CONFERENCE CALL AND GO OVER THE NUMBERS. 4/29 TO 6/18 TEST.

These are my 3 main Uni Renko sizes on the ES!

3/10/240

3/10/210

3/10/150

These smoothed Renko sizes can manage chop and trend markets with the Sym Scalper because they take a lot of the NOISE out of the market. If traders wish to go lower than these 3 settings, NOISE will come into the market more. If users are looking to use the Scalper on smaller Renko sizes lower than a 150 reversal, then users should not let these run on a 24-hour basis. These should be used minutes after the news when the markets are typically going vertical for the first 45 minutes or so. There is too much noise on these lower Renko sizes so these are not to be traded 24 hours like the 3/10/240, 3/10/210 or 3/10/150 which can filter the noise out and catch some trend ZONE BREAKOUT moves and liquidity grabs. We have found the best time to use these lower Renko sizes would be right after a news event when chop is not as present since typically there are directional pushes which are needed on smaller Renko sizes.

1/10/40 or 3/10/40 or even 3/20/40 are smaller Renko sizes that users can test on news events. Remember, the strategy will shut down if a news event comes up so we educate turning the start time to 3-5 minutes after the news release under the strategy. Typically, Non-Farm Payrolls, CPI, PPI, Retail Sales and GDP, Fed Minutes and Fed rates will be volatile on average the first 45 minutes. Users can test these lower Renko's sizes for that. REMEMBER, the lower settings are NOT designed to

run through chop and trend like the larger smoothed Renko and should not be traded 24 hours like the larger sizes. We educate starting out with the 3/10/240, 3/10/210 and the 3/10/150 to take the noise out of the markets. We showed that even when using these larger Renko sizes, smaller hard stops can still be placed.

This will be a great start to show how the SYM SCALPER works with SMOOTHED optimized Renko settings. Remember, these are not set in stone. Members may find a better a better combination on their own by tweaking the TREND and REVERSAL Uni Renko settings. I go over how to change the TREND and REVERSAL numbers on the UNI RENKO bar type to fit users reward to risk. Remember, the SCALPER has ALL 3 setups built into it with the trend filter. Simply changing the Trend and Reversal numbers will directly affect the performance of the Scalper. These settings that we optimized are great starting points for traders.

Many Ticks to all and we look forward to seeing all in the recorded MEMBERS ONLY calls going forward. **REMEMBER TO PLAY THE PART1, PART2 AND PART3 TRAINING SERIES ON HOW TO USE THE SOFTWARE THAT WILL BE PLACED ON THE MEMBER DOWNLOAD PAGE.**

**** The Software is for Educational Purposes Only. Please read our Risk Disclosure for complete risk details.****

DayTradingtheFutures, SymmetryIndicatorsLLC , JSalesLLC Risk Disclaimers

***Risk Disclosure / Risk Disclaimer:**

Risk Disclosure: Futures and forex trading contains substantial risk and is not for every investor. An investor could potentially lose all or more than the initial investment. Risk capital is money that can be lost without jeopardizing one's financial security or lifestyle. Only risk capital should be used for trading and only those with sufficient risk capital should consider trading. Past performance is not necessarily indicative of future results.

Hypothetical Performance Disclosure: Hypothetical performance results have many inherent limitations, some of which are described below. no representation is being made that any account will or is likely to achieve profits or losses like those shown; in fact, there are frequently sharp differences between hypothetical performance results and the actual results subsequently achieved by any particular trading program. One of the limitations of hypothetical performance results is that they are generally prepared with the benefit of hindsight. In addition, hypothetical trading does not involve financial risk, and no hypothetical trading record can completely account for the impact of financial risk of actual trading. for example, the ability to withstand losses or to adhere to a particular trading program despite trading losses are material points which can also adversely affect actual trading results. There are numerous other factors related to the markets in general or to the implementation of any specific trading program which cannot be fully accounted for in the preparation of hypothetical performance results and all which can adversely affect trading results.

Jason Wireman/Day Trading the Futures/Symmetry Indicators or Jason Wireman employees do not hold themselves out as a Commodity Trading Advisor ("CTA"). Given this representation, all information and material provided by

Jason Wireman or Jason Wireman employees is for educational purposes only and should not be considered specific investment advice.

CFTC RULE 4.41 -HYPOTHETICAL OR SIMULATED PERFORMANCE RESULTS HAVE CERTAIN LIMITATIONS. UNLIKE AN ACTUAL PERFORMANCE RECORD, SIMULATED RESULTS DO NOT REPRESENT ACTUAL TRADING. ALSO, SINCE THE TRADES HAVE NOT BEEN EXECUTED, THE RESULTS MAY HAVE UNDER OR OVER COMPENSATED FOR THE IMPACT, IF ANY OF CERTAIN MARKET FACTORS, SUCH AS LACK OF LIQUIDITY. SIMULATED TRADING PROGRAMS IN GENERAL ARE ALSO SUBJECT TO THE FACT THAT THEY ARE DESIGNED WITH THE BENEFIT OF HINDSIGHT. NO REPRESENTATION IS BEING MADE THAT ANY ACCOUNT WILL OR IS LIKELY TO ACHIEVE PROFIT OR LOSSES SIMILAR TO THOSE SHOWN. PAST PERFORMANCE IS NOT NECESSARILY INDICATIVE OF FUTURE RESULTS.

Commodity Futures Trading Commission – Futures and Options trading has large potential rewards, but also large potential risk. You must be aware of the risks and be willing to accept them to invest in the futures and options markets. Don't trade with money you can't afford to lose. This is neither a solicitation nor an offer to Buy/Sell futures, stocks or options on the same. No representation is made that any account will or is likely to achieve profits or losses like those discussed on this web site. The past performance of any trading system or methodology is not necessarily indicative of future results.

NO REPRESENTATION IS BEING MADE THAT ANY ACCOUNT WILL OR IS LIKELY TO ACHIEVE PROFITS OR LOSSES SIMILAR TO THOSE DISCUSSED WITH Jason Wireman/DayTradingtheFutures.com/SymmetryIndicators.com or Jason Wireman employees, SUPPORT AND TEXTS. Jason Wireman's Software/Live Room COURSE(S), PRODUCTS AND SERVICES SHOULD BE USED AS LEARNING AIDS ONLY AND SHOULD NOT BE USED TO INVEST REAL MONEY. IF YOU DECIDE TO INVEST REAL MONEY, ALL TRADING DECISIONS SHOULD BE YOUR OWN.

Trading commodities on the margin carries a high level of risk and may not be suitable for all investors. The high degree of leverage can work against you as well as for you. Before deciding to invest in commodities you should carefully consider your investment objectives, level of experience, and risk appetite. The possibility exists that you could sustain a loss of some or all your initial investment and therefore you should not invest money that you cannot afford to lose. You should be aware of all the risks associated with commodities trading, and seek advice from an independent financial adviser if you have any doubts

Education and information contained from Jason Wireman/DayTradingthefutures.com/SymmetryIndicators.com or Jason Wireman employees, is not an invitation to trade Crude Oil, Gold Futures or any other futures markets. Trading requires risking money in pursuit of future gain. That is your decision. Do not risk any money you cannot afford to lose. This document does not consider your own individual financial and personal circumstances. It is intended for educational purposes only and NOT as individual investment advice. Do not act on this without advice from your investment professional, who will verify what is suitable for your needs & circumstances. Failure to seek detailed professional personally tailored advice prior to acting could lead to you acting contrary to your own best interests & could lead to losses of capital.

Use of any of this information is entirely at your own risk, for which Jason Wireman/Daytradingthefutures.com/Symmetry Indicators or Jason Wireman employees will not be liable. Neither we nor any third parties provide any warranty or guarantee as to the accuracy, timeliness, performance, completeness or suitability of the information and content found or offered in the material for any particular purpose. You acknowledge that such information and materials may contain inaccuracies or errors and we expressly exclude liability for any such inaccuracies or errors to the fullest extent permitted by law. All information/software from Jason Wireman/DayTradingthefutures/Symmetry Indicators or Jason Wireman employees exists, solely and entirely for educational purposes.

*Risk Disclosure / Risk Disclaimer Continued.

There is a risk of loss in futures, Forex and options trading. There is risk of loss trading futures, Forex and options online. Please trade with capital you can afford to lose. Past performance is not necessarily indicative of future results. Nothing in this site is intended to be a recommendation to buy or sell any futures or options market. All information has been obtained from sources, which are believed to be reliable, but accuracy and thoroughness cannot be guaranteed. Readers are solely responsible for how they use the information and for their results. Symmetry Indicators, Inc. and DayTradingTheFutures, Inc and their affiliated websites, do not guarantee the accuracy or completeness of the information or any analysis based thereon. Margins subject to change without

notice. Commission Rule 4.41(c)(1) applies to "any publication, distribution or broadcast of any report, letter, circular, memorandum, publication, writing, advertisement or other literature..." Commission Rule 4.41(b) prohibits any person from presenting the performance of any simulated or hypothetical futures account or futures interest of a CTA, unless the presentation is accompanied by a disclosure statement. The statement describes the limitations of simulated or hypothetical futures trading as a guide to the performance that a CTA is likely to achieve in actual trading. Additional Risk Disclosure Statement for System Traders: Commission Rule 4.41(b)(1)(I) hypothetical or simulated performance results have certain inherent limitations. Unlike an actual performance record, simulated results do not represent actual trading. Also, since the trades have not actually been executed, the results may have under- or over-compensated for the impact, if any, of certain market factors, such as lack of liquidity. Simulated trading programs in general are also subject to the fact that they are designed with the benefit of hindsight. No representation is being made that any account will or is likely to achieve profits or losses. There have been no promises, guarantees or warranties suggesting that any trading will result in a profit or will not result in a loss. Hypothetical performance results have many inherent limitations, some of which are described below. No representation is being made that any account will or is likely to achieve profits or losses like those shown. In fact, there are frequently sharp differences between hypothetical performance results and the actual results subsequently achieved by any trading program. One of the limitations of hypothetical performance results is that they are generally prepared with the benefit of hindsight. In addition, hypothetical trading does not involve financial risk, and no hypothetical trading record can completely account for the impact of financial risk in actual trading. For example, the ability to withstand losses or adhere to a particular trading program despite trading losses are material points which can also adversely affect actual trading results. There are numerous other factors related to the markets in general or to the implementation of any specific trading program which cannot be fully account for in the preparation of hypothetical performance results and all of which can adversely affect actual trading results. (CFTC RULE 4.41) CALCULATED OR SUGGESTED ENTRY AND EXIT POINTS CAN PRODUCE HYPOTHETICAL OR SIMULATED PERFORMANCE RESULTS WHICH HAVE CERTAIN INHERENT LIMITATIONS UNLIKE ACTUAL PERFORMANCE RECORD: SIMULATED RESULTS DO NOT REPRESENT ACTUAL TRADING. ALSO, SINCE THE TRADES HAVE NOT ACTUALLY BEEN EXECUTED, THE RESULTS MAY HAVE UNDER- OR OVERCOMPENSATED FOR THE IMPACT, IF ANY, OF CERTAIN MARKET FACTORS, SUCH AS LACK OF LIQUIDITY. SIMULATED TRADING PROGRAMS IN GENERAL ARE ALSO SUBJECT TO THE FACT THAT THEY ARE DESIGNED WITH THE BENEFIT OF HINDSIGHT. NO REPRESENTATION IS BEING MADE THAT ANY ACCOUNT WILL, OR IS LIKELY TO ACHIEVE, PROFITS OR LOSSES SIMILAR TO THOSE PREDICTED OR SHOWN. HYPOTHETICAL OR SIMULATED PERFORMANCE RESULTS HAVE CERTAIN LIMITATIONS. UNLIKE AN ACTUAL PERFORMANCE RECORD, SIMULATED RESULTS DO NOT REPRESENT ACTUAL TRADING. ALSO, SINCE THE TRADES HAVE NOT BEEN EXECUTED, THE RESULTS MAY HAVE UNDER OR OVER COMPENSATED FOR THE IMPACT, IF ANY, OF CERTAIN MARKET FACTORS, SUCH AS LACK OF LIQUIDITY. SIMULATED TRADING PROGRAMS IN GENERAL ARE ALSO SUBJECT TO THE FACT THAT THEY ARE DESIGNED WITH THE BENEFIT OF HINDSIGHT. NO REPRESENTATION IS BEING MADE THAT ANY ACCOUNT WILL OR IS LIKELY TO ACHIEVE PROFITS OR LOSSES SIMILAR TO THOSE SHOWN. SIMULATED RESULTS DO NOT NECESSARILY IMPLY FUTURE PROFITS. THE RISK OF LOSS IN TRADING FOREX OR COMMODITY CONTRACTS CAN BE SUBSTANTIAL. YOU SHOULD THEREFORE CAREFULLY CONSIDER WHETHER SUCH TRADING IS SUITABLE FOR YOU IN LIGHT OF YOUR FINANCIAL CONDITION. HYPOTHETICAL PERFORMANCE RESULTS HAVE MANY INHERENT LIMITATIONS, SOME OF WHICH ARE DESCRIBED BELOW. NO REPRESENTATION IS BEING MADE THAT ANY ACCOUNT WILL OR IS LIKELY TO ACHIEVE PROFITS OR LOSSES SIMILAR TO THOSE SHOWN. IN FACT, THERE ARE FREQUENTLY SHARP DIFFERENCES BETWEEN HYPOTHETICAL PERFORMANCE RESULTS AND THE ACTUAL RESULTS SUBSEQUENTLY ACHIEVED BY ANY PARTICULAR TRADING PROGRAM. ONE OF THE LIMITATIONS OF HYPOTHETICAL PERFORMANCE RESULTS IS THAT THEY ARE GENERALLY PREPARED WITH THE BENEFIT OF HINDSIGHT. IN ADDITION, HYPOTHETICAL TRADING DOES NOT INVOLVE FINANCIAL RISK AND NO HYPOTHETICAL TRADING RECORD CAN COMPLETELY ACCOUNT FOR THE IMPACT OF FINANCIAL RISK IN ACTUAL TRADING. FOR EXAMPLE, THE ABILITY TO WITHSTAND LOSSES OR ADHERE TO A PARTICULAR TRADING PROGRAM IN SPITE OF TRADING LOSSES ARE MATERIAL POINTS WHICH CAN ALSO ADVERSELY AFFECT ACTUAL TRADING RESULTS. THERE ARE NUMEROUS OTHER FACTORS RELATED TO THE MARKETS IN GENERAL OR TO THE IMPLEMENTATION OF ANY SPECIFIC TRADING PROGRAM WHICH CANNOT BE FULLY ACCOUNTED FOR IN THE PREPARATION OF HYPOTHETICAL PERFORMANCE RESULTS AND ALL OF WHICH CAN ADVERSELY AFFECT ACTUAL TRADING RESULTS.

Copyright 2023. Daytrading The Futures - All Rights Reserved



[Contact Us](#)

- [DTTF Home](#)
- [Free 3 Day Trial](#)
- [News Trade E-Book](#)

Algorithm Day Trading for the Beginner and Professional Trader.

[Click to Read Testimonials](#)

[Free 3 Day Trade Room Trial](#)

“NinjaTrader® is a registered trademark of NinjaTrader Group, LLC. No NinjaTrader company has any affiliation with the owner, developer, or provider of the products or services described herein, or any interest, ownership or otherwise, in any such product or service, or endorses, recommends or approves any such product or service.”

*The Software is for Educational
Purposes Only. Please read our
Risk Disclosure for complete risk*